



# Advanced Open Sow Housing System

Maple Leaf Foods is committed to being a leader in animal care. Better care for our animals is one of our sustainability priorities and reflects our goal to be the most sustainable protein company on earth.

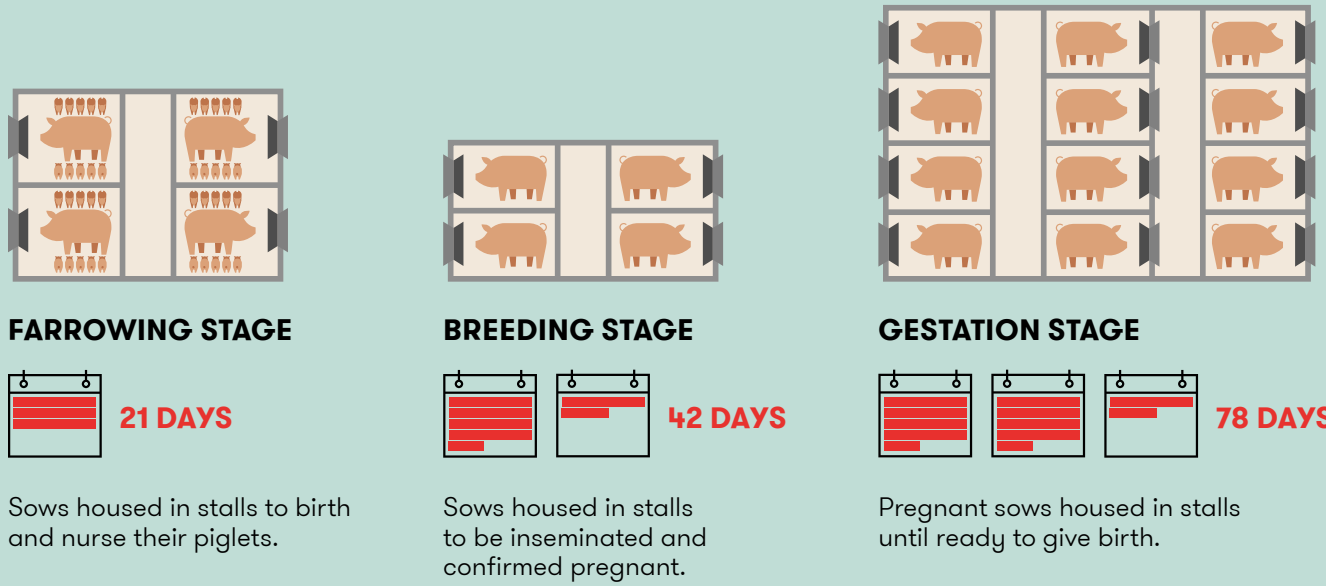
While all pigs that are raised for meat are housed in open pens, industry practice has been to confine sows (mother pigs) in confining gestation crates. At Maple Leaf Foods, we challenged ourselves to do better. We have invested in research and significant barn redesign and construction to convert all of our sows to open housing. To date, we have moved more than 50 per cent of our sows to our Advanced Open Sow Housing system where they are free to roam, feed and socialize. We are on track to complete this transition by the end of 2021.

## Legend



## Conventional Sow Housing System

The majority of the industry in Canada and US applies this conventional system for their breeding practices.

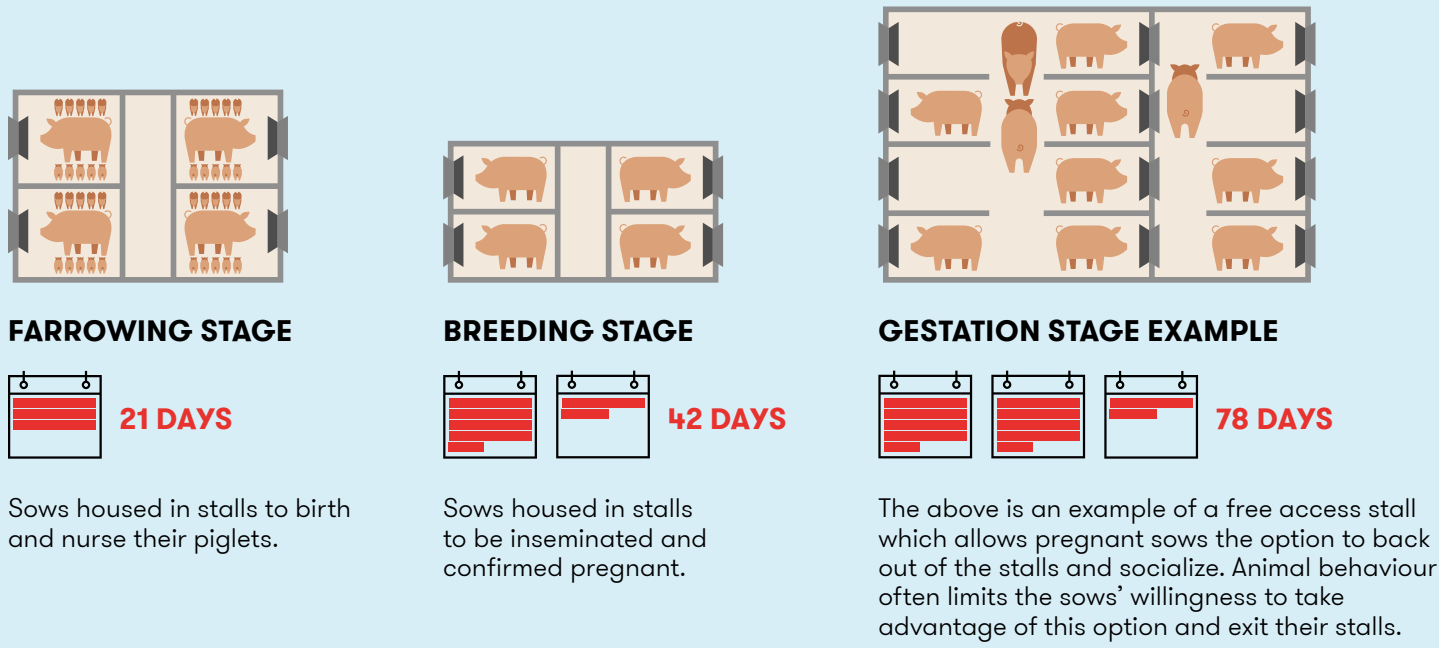


### THE SOW EXPERIENCE

- Lifetime of total confinement
- Cannot turn around
- No opportunity to exercise
- No socializing with other sows
- More prone to injury due to lack of movement
- Limited interaction with caregivers

## Loose Sow Housing System

A small percentage of the industry in Canada and US have adopted a system that allows sows more movement during pregnancy. Sows are still housed in stalls during the farrowing and breeding stages until confirmed pregnant.

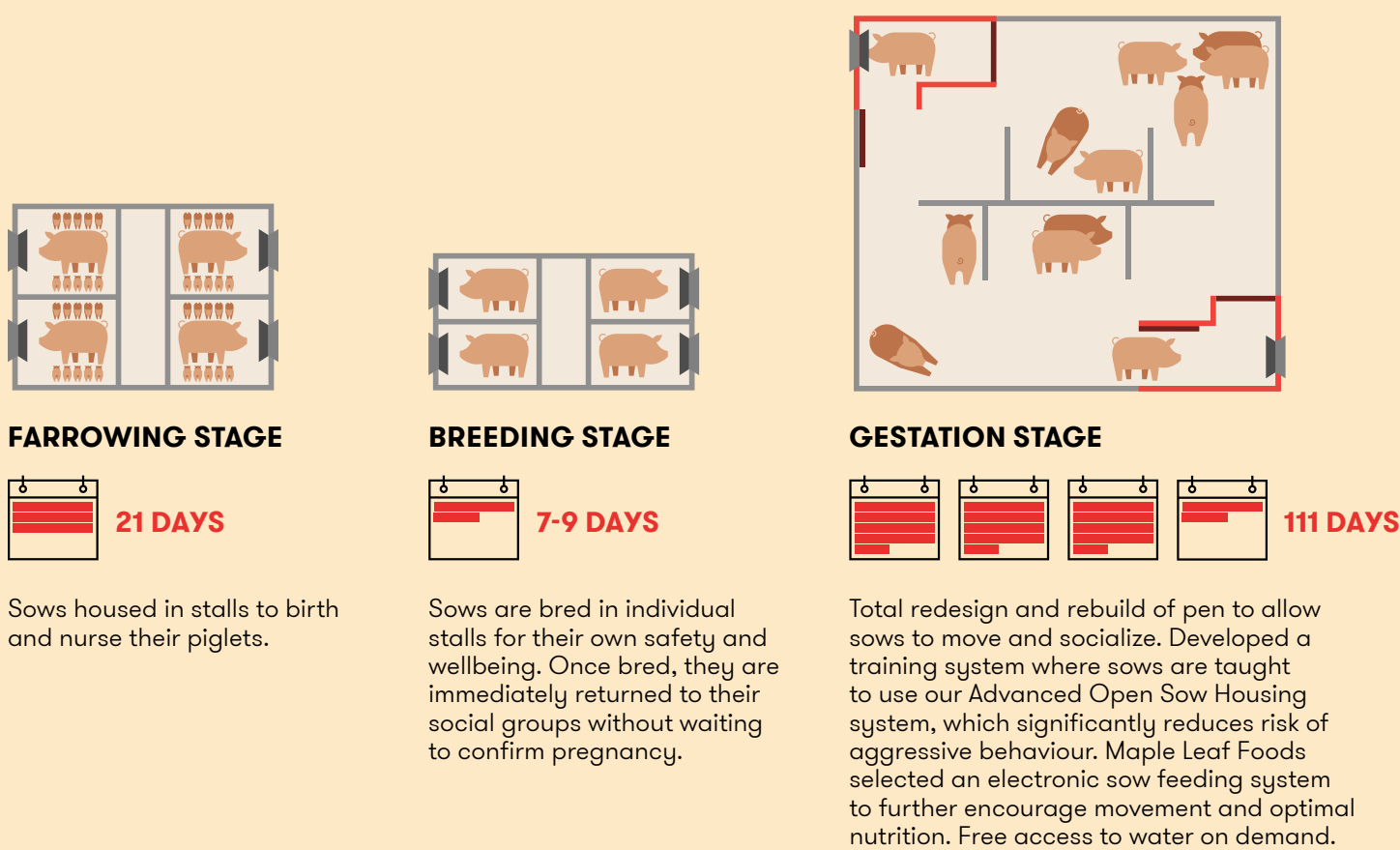


### THE SOW EXPERIENCE

- Confined in stalls during farrowing, breeding and early stage of pregnancy
- Opportunity to exercise and socialize

## Maple Leaf Foods Advanced Open Sow Housing System

Our unique approach significantly lowers the time a sow spends in a stall, providing 100% open housing following breeding and throughout pregnancy, in an environment where they are free to roam, feed and socialize.



### THE SOW EXPERIENCE

- Allows sows to explore their surroundings
- Improved well-being, health
- Improved leg, joint health due to lots of opportunity to move and exercise
- Higher social interaction amongst social group
- Reduced aggressive behaviour
- More interaction with caregivers
- Feed program tailored to each sow for her individual health
- Cool water misters for sows during summer

## Our sustainability and animal welfare improvements:

