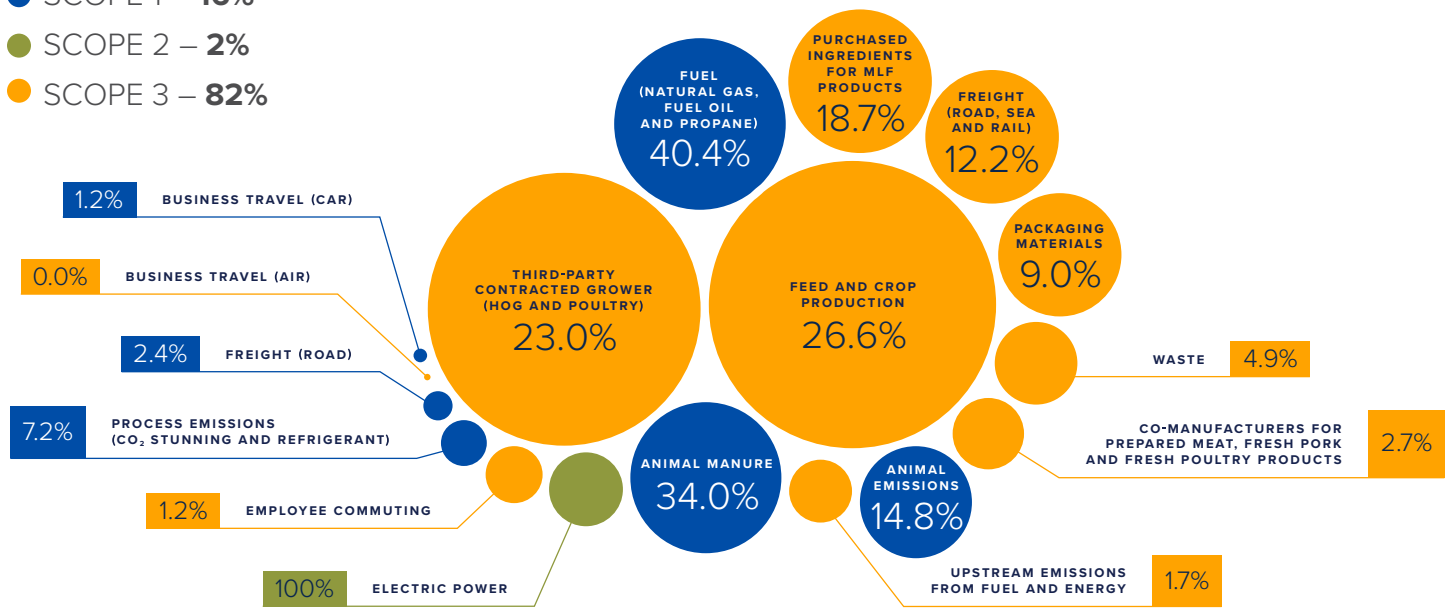


Carbon Inventory

Total Emission Sources

- SCOPE 1 – 16%
- SCOPE 2 – 2%
- SCOPE 3 – 82%



In technical terms, emissions can be categorized into three different types:

- Scope 1: All direct greenhouse gas (GHG) emissions under Maple Leaf Foods operational control
- Scope 2: Indirect GHG emissions from consumption of purchased electricity, heat or steam
- Scope 3: Indirect GHG emissions not covered in Scope 1 and 2 that occur throughout the supply chain