

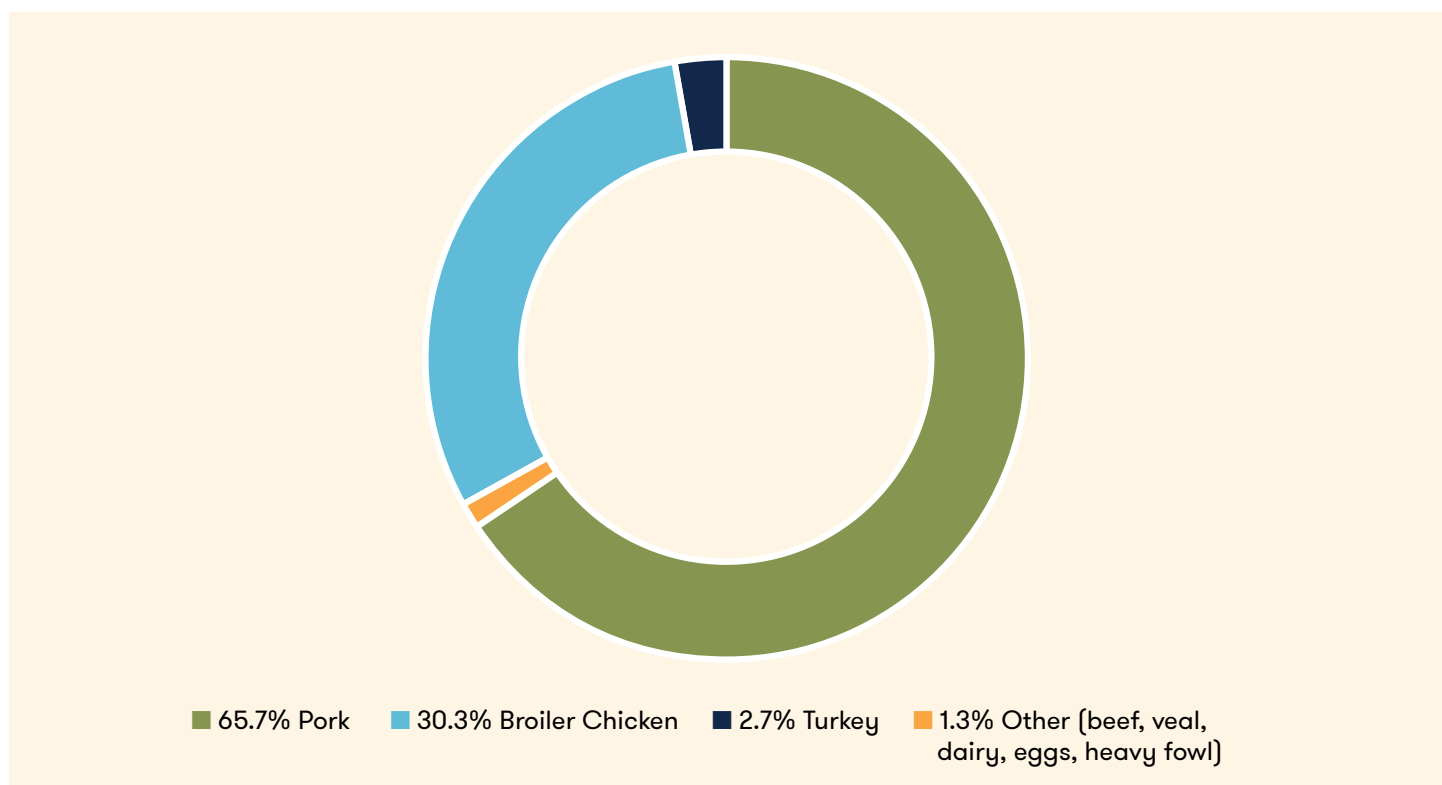
# Maple Leaf Foods

## Animal Care Performance Report 2021

### STATEMENT OF SCOPE

Maple Leaf Foods is an integrated company that owns pig production, broiler breeder chicken growing production, hatching egg production, broiler chicken hatcheries, and pork and poultry processing plants. In 2021, we had approximately 200 pig production locations, one broiler breeder grower farm and three hatching egg production farms, as well as three broiler chicken hatcheries supplying our contracted chicken growers. We operated two pork processing plants and four broiler chicken processing plants and acquired a fifth broiler chicken processing plant mid-year. We are major producers of pork and chicken and we work closely with independent pig and poultry farmers and related service providers who supply our processing operations. We also source small quantities of turkey, beef, veal, dairy and eggs for use in our products from supply chains outside our direct care and control.

### 2021 Proportion of Maple Leaf Foods' Global Animal Protein Supply Chain by Species (Kilograms)



The scope of our [Commitment to Animal Care](#) extends throughout our global supply chain for all animal proteins we source. The primary focus of our Commitment to Animal Care is establishing standards and practices applicable to animals and animal operations under our care and control, and the Canadian provinces in which they are located. Our Commitment to Animal Care additionally establishes a commitment to work closely with our producer partners and other suppliers to advance high standards of animal care across our supply chain.

The disclosures and performance metrics within this report are reported as a proportion of Maple Leaf Foods' total global animal protein supply chain, by species. Areas where the scope of our current commitments are limited are clearly defined. The volume processed at our newly acquired broiler chicken processing plant is included in the global animal protein supply chain. Some metrics in this report exclude this new plant as we are in the process of onboarding the plant to track the data.

# Maple Leaf Foods Animal Care Performance Report 2021

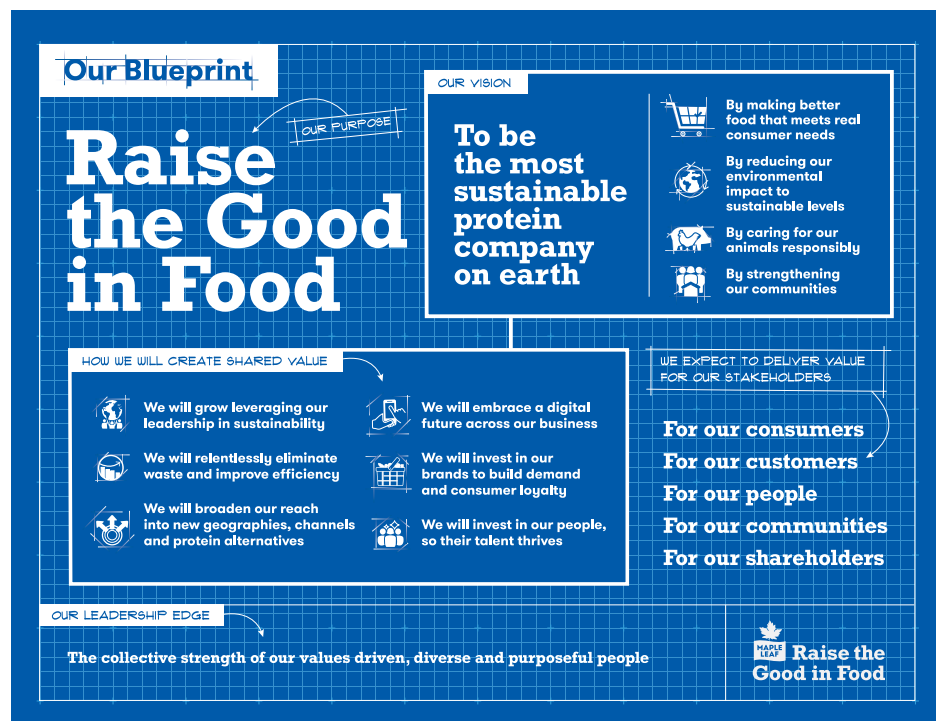
## 2021 Proportion of Global Animal Protein Supply Chain by Species Under Maple Leaf Foods' Care and Control

Species	Proportion Under Maple Leaf Care and Control	Definition
Hatching Egg and Chick Production	18%	Broiler chicks produced by broiler breeder chickens we own that are raised on farms we operate in Ontario, Canada, as a proportion of total chicks produced in hatcheries we own and operate. The remainder of our hatching eggs and chicks are sourced from third-party Canadian and US suppliers.
Broiler Chicken Processing	89%	Broiler chickens sourced from independent Canadian farmers that we process in our primary processing plants. The remainder of our chicken is sourced from third-party suppliers.
Pig Production	40%	Market pigs we own that are raised on farms we operate or lease in Western Canada. Our pigs supply approximately 41% of our primary processing plant volume. The remainder of the pigs required for our primary processing plants are sourced from third-party Canadian farmers.
Pork Processing	96%	Pork produced from our own operations and that of independent Canadian pig farmers processed in our primary processing plants. The remainder of our pork is sourced from third-party suppliers.
Turkey Procurement	96%	Turkeys sourced from independent Canadian farmers that we procure under supply contracts and are processed under a custom processing contract. The remainder of our turkey is sourced from third-party suppliers.
Other Species	0%	We source small quantities of turkey, heavy fowl, beef, veal, eggs, and dairy products from third-party suppliers.

## Farm Animal Welfare Importance, Commitment, and Policies

Maple Leaf has strong values that deeply define our culture and how we operate. These values extend to how we treat the animals we raise or source. Better care for animals is one of our four sustainability priorities, and it reflects our goal to be a leader in animal care. Read more about our [Commitment to Animal Care](#).

We are committed to enhancing our animal wellness practices in a manner that advances the Five Freedoms – the most widely accepted global standard for responsible animal care. We also rely on the Five Domains of animal welfare to inform our animal care practices – a widely adopted approach for assessing physical and functional factors that affect an animal’s welfare and overall mental state. Read more about the [Five Freedoms and Five Domains](#).



## Close Confinement

Maple Leaf Foods is committed to avoiding close confinement in all animal production wherever possible. We acknowledge that replacement of traditional animal housing systems is a complex process requiring considerable preparation, investment and training of animal handlers. We firmly believe that animal housing replacements require time and care to meaningfully improve animal welfare outcomes, and do not advocate rushing or completing housing replacements in a poor-quality manner.

Our broiler breeders, broiler chickens and turkeys are never kept in confinement housing. They are raised in free-run, open barn systems with freedom to exercise, rest and socialize as they please. Broiler breeders, broiler chickens and turkeys raised in Canada must be provided with space allowances as defined in the Canadian Hatching Egg Producers Animal Care Program, Chicken Farmers of Canada Animal Care Program, and Turkey Farmers of Canada Flock Care Program. These programs are based on the National Farm Animal Care Council (NFACC) Code of Practice for the Care and Handling of Hatching Eggs, Breeders, Chickens and Turkeys, and compliance is mandatory for all commercial poultry farmers.

We are committed to the elimination of gestation stalls for sows and have converted 100% of our owned sow spaces (69,850 sow spaces) to our Advanced Open Sow Housing system as of the end of 2021. In this system, sows are returned to group housing shortly after breeding, allowing them to spend the full gestation period in group housing, free to roam and socialize with other sows. Read more about our [Advanced Open Sow Housing system](#).

We are supportive of efforts by NFACC and the Canadian Pork Council to require all Canadian pig farmers to implement loose sow housing. Group housed pigs and sows in Canada must be provided with space allowances as defined in the Canadian Pork Excellence PigCARE program, which is based on the NFACC Code of Practice for the Care and Handling of Pigs. Compliance with either the Canadian Pork Excellence PigCARE program or Canadian Quality Assurance® Animal Care Assessment™ program is mandatory for all pig farmers supplying federally licensed establishments.

...we have converted **100%** of our owned sow spaces to **ADVANCED OPEN SOW HOUSING**

## Proportion by Species Free of Close Confinement

Species	2020 Proportion Free of Close Confinement	2021 Proportion Free of Close Confinement	Comments
Broiler Chickens	100%	100%	Broilers supplying our operations are never housed in cages.
Broiler Breeders	100%	100%	Broiler breeders in our supply chain are never housed in cages.
Market Pigs	100%	100%	Market pigs supplying our operations are raised in open pens.
Sows	20%	24%	Percent of total global pork supply sourced from sows free of gestation stalls after confirmation of pregnancy. We have converted 100% of our owned sow spaces to our Advanced Open Sow Housing system.
Turkey	100%	100%	Turkeys supplying our operations are never housed in cages.
Other Species	Not available	Not available	Data for beef, veal, laying hens, and dairy cattle are not available for the 2021 reporting year.

## Environmental Enrichment

As part of our commitment to enhancing the mental and physical well-being of our animals, we view environmental enrichments as an important means of supporting natural behaviours, reducing boredom and improving the health of our animals. Thorough investigation is needed prior to implementing enrichments to ensure they are appropriate to the type and age of animals and design of housing. Practical aspects must also be considered including biosecurity, environmental impacts, safety and ease of use for farm workers.

All of our owned pigs are provided environmental enrichments in the form of carefully selected hanging toys for our nursery-finisher pigs and group housed sows, and we are piloting additional sow enrichments such as burlap.

We have completed extensive field trials evaluating broiler environmental enrichments and we began our phased implementation of enrichments to support pecking, perching and hiding behaviours in 2021. We also provide ramp platform and pecking stone enrichments to our breeder grower flocks which have led to improvements in the feathering and health of our birds, and we are evaluating ramp platforms in our broiler breeder flocks.

Broiler chickens, broiler breeders, and turkeys live in open barns with bedding provided for comfort and to promote behaviours such as dustbathing. In Canada, broiler chicken and broiler breeder barns are cleaned out and provided with fresh bedding after every flock cycle.

## 2020 Proportion by Species with Environmental Enrichments

Species	2020 Proportion Free of Close Confinement	2021 Proportion Free of Close Confinement	Comments
Broiler Chickens	4%	4%	Broilers with environmental enrichments as a proportion of total global broiler chicken supply. Enrichments provided on each farm include grid ramps for perching, trapezoid huts for hiding and resting, and metal washers on zip-ties to promote pecking. In 2021, we completed the first phase of our enrichment implementation by replacing all existing enrichments with our redesigned objects.
Pork	39%	40%	Pigs that were provided environmental enrichments in the nursery through finisher stages, as a percent of total global pork supply. Enrichments were provided in the form of hanging toys.
Other Species	Not available	Not available	Data for broiler breeders, turkey, beef, veal, laying hens, and dairy cattle are not available for the 2021 reporting year.

## Genetic Engineering and Cloning

Maple Leaf Foods prohibits the use of genetic engineering or cloning in all animal types in all of our supply chains. 100% of animal protein sourced from all species in our global animal protein supply chain is understood to be free of genetic engineering and cloning.

## Antibiotics and Growth Promoting Substances

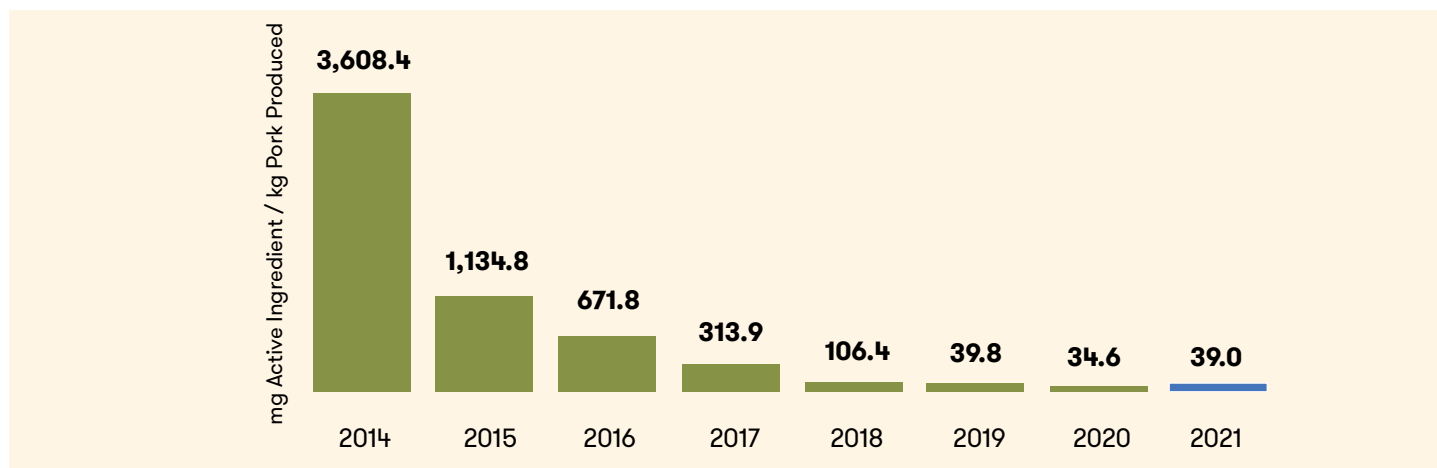
Maple Leaf Foods believes the livestock and poultry industries play an important role in preserving the effectiveness of antibiotics to protect human and animal health. Antibiotics are to be used in a responsible manner which seeks to prevent or reduce the development of antibiotic resistance, while ensuring sick animals receive timely and appropriate treatment to protect animal welfare.

We prohibit the use of all antibiotics of importance to human medicine for growth promotion in all species and supply chains, which is defined as subtherapeutic administration of antimicrobials to improve feed efficiency or other production parameters. Responsible antibiotic use involves veterinary oversight and limiting use to those class(es) of least importance to human medicine likely to result in efficacious treatment, in accordance with the World Health Organization and Health Canada classifications of antibiotics. Antibiotic use must comply with applicable federal, provincial, state, and veterinary regulations and standards.

As part of our commitment to reducing antibiotic use, we are among North America’s largest producers of Raised Without Antibiotics pork, and Canada’s largest producer of Raised Without Antibiotics chicken. Animals in our Raised Without Antibiotics program never receive antibiotics for any purpose, including growth promotion, prophylactic and therapeutic uses. This has enabled us to make dramatic reductions in the volume of antibiotics used in our pork and poultry supply chains. Successfully raising animals without antibiotics relies on enhanced skill development of our farmers supported by our technical service experts and veterinarians, further supported by specialized feed and water programs, high levels of biosecurity, and strong vaccination programs. We ensure that sick animals are identified and treated on a timely basis to protect animal welfare, using clear standard operating procedures for our technical team and farmers. Meat and poultry from animals who have been treated with antibiotics do not bear a Raised Without Antibiotics claim. Our Raised Without Antibiotics programs undergo annual third-party audits to ensure compliance throughout our entire pork and poultry supply chains. [Read more](#) about how we are reducing antibiotic usage.

*In 2021, antibiotic usage in our owned pigs averaged 39.0 mg of active ingredient per kg of pork produced based on antibiotic quantity dispensed. Of those pigs, 56% were Raised Without Antibiotics and never received any antibiotics throughout their entire lifetime.*

### Antibiotic Use in Maple Leaf Foods’ Pig Operations



# Maple Leaf Foods Animal Care Performance Report 2021

We support regulations and labelling programs that eliminate growth promoter use including the Canadian Ractopamine-Free Pork Certification Program, Canadian regulations prohibiting the sale and use of recombinant bovine somatotropin, and Canadian and US regulations prohibiting the use of growth-promoting hormones in poultry and pork and the use of medically important antibiotics for growth promotion purposes. We are active supporters of initiatives by Canada’s poultry industry to reduce antibiotic use, including the elimination of Category I and II antibiotics for preventative use by the Chicken Farmers of Canada and the elimination of Category I, II, and III antibiotics for preventative use by the Turkey Farmers of Canada.

## Proportion by Species Free of Growth Promoting Substances

Species	2020 Proportion Free of Growth Promoting Substances	2021 Proportion Free of Growth Promoting Substances	Comments
Broiler Chickens	100%	100%	Chickens we process or source never receive added hormones, beta-adrenergic agonists or medically important antibiotics for growth promotion, like all chickens in Canada and the United States.
Pork	97%	98%	100% of pork we source comes from pigs that never received medically important antibiotics or hormones for growth promotion, like all pigs in Canada and the United States. All pork sourced in Canada comes from pigs that never received beta-adrenergic agonists; the remaining 2% comes from countries where beta-adrenergic agonist use is unknown.
Turkey	96%	97%	100% of turkey we source never receive medically important antibiotics or hormones for growth promotion, like all turkeys in Canada and the United States. All turkey sourced in Canada never receives beta-adrenergic agonists; the remaining 3% comes from countries where beta-adrenergic agonist use is unknown.
Laying Hens	100%	100%	Eggs we source come from hens that never receive added hormones or medically important antibiotics for production, like all chickens in Canada.
Dairy	100%	100%	Dairy products we source come from cows that never receive recombinant bovine somatotropin or other added hormones for increasing milk production. Dairy products we source come from cows that never receive medically important antibiotics for growth promotion or production, like all dairy cattle in Canada.
Other Species	Not available	Not available	Data for beef and veal are not available for the 2021 reporting year.

## Physical Alterations

We are committed to reducing the use of physical alterations or replacing them with more humane alternatives wherever possible, provided the changes do not lead to adverse animal welfare outcomes. It is important that pain control is provided whenever relevant and feasible. All pigs raised in Canada must be provided with pain control for physical alterations in accordance with the National Farm Animal Care Council (NFACC) Code of Practice for the Care and Handling of Pigs. We are undergoing a phased implementation of immunocastration in our owned operations to replace surgical castration. Currently, tail docking is a necessary piglet procedure in order to prevent tail injuries from other pigs. We do not ever perform teeth clipping or ear notching on our piglets and tattooing of piglets is limited to genetic replacement animals only. Poultry physical alterations are necessary in broiler breeder chickens and in turkeys for the long-term welfare of the flock to reduce or eliminate injuries that may cause pain. Physical alterations are performed using the most humane methods possible and limited to only essential alterations. All broiler chickens that Maple Leaf Foods sources never undergo physical alterations, including beak treatment, consistent with the NFACC Code of Practice. No physical alterations are performed in Maple Leaf Foods-owned hatcheries.

## Proportion by Species Free of Specified Physical Alterations

Species	2020 Proportion Free of Specified Physical Alterations	2021 Proportion Free of Specified Physical Alterations	Comments
Broiler Chickens	100%	100%	Broiler chickens we source that are free of all physical alterations.
Pork	39%	40%	Pork we produce that never undergoes teeth clipping, and where pain control is provided for tail docking and castration. In 2021, we began a phased elimination of surgical castration in all pigs we manage.
Turkey	0%	0%	Turkeys undergo beak treatment, dewclaw removal and occasionally toe treatment and/or snood removal at the hatchery to prevent injuries during the growing period.
Broiler Breeders	0%	0%	Broiler breeders normally receive beak treatments and back toe treatments (males) to prevent or reduce injuries.
Laying Hens	0%	0%	Laying hens receive beak treatments to prevent or reduce injuries.
Dairy	100%	100%	Dairy sourced from cows that are never routinely tail docked. Tail docking is only permitted in situations of medical necessity such as an injury.
Other Species	Not available	Not available	Data for beef and veal are not available for the 2021 reporting year.

## Pre-slaughter Stunning

Stunning and back-up stunning are critically important steps in processing operations to ensure animal welfare is protected. We require pre-slaughter stunning for 100% of animals of all species supplying Maple Leaf Foods throughout our global supply chains. Back-up stunning is critical to protect animal welfare any time there is a concern that an animal may not have been stunned effectively. We firmly believe that processing plant employees must be encouraged to apply back-up stunning without reservation. It is always better to apply a secondary stun to more animals than necessary than to risk missing an animal.

We are committed to continuously improving stunning technologies in our facilities. We are implementing controlled atmosphere stunning for all broiler chickens we process, which reduces stress to birds by rendering them insensible prior to shackling. This system was first implemented in our Edmonton operation in 2019 and will also be in our London operation, which we will begin transitioning production to once construction is complete. In 2021, 19% of chickens we processed were stunned using controlled atmosphere stunning. We utilize CO<sub>2</sub> stunning in our Brandon pork plant which allows pigs to be moved in groups, reducing stress to the pigs and enabling easier handling.

## Proportion of Global Animal Protein Supply Chain Requiring Pre-Slaughter Stunning and Stunning Effectiveness

Species	2020 Proportion Subject to Pre-Slaughter Stunning and Stunning Effectiveness	2021 Proportion Subject to Pre-Slaughter Stunning and Stunning Effectiveness	Comments
Total Protein Supply	99.7%	99.7%	Proportion of global animal protein supply subject to pre-slaughter stunning based on total kilograms sourced of broiler chicken, heavy fowl, pork, turkey, beef, veal, eggs, and dairy. The remaining 0.3% is due to lack of available data on slaughter of dairy cattle and laying hens, which are not part of our supply chain.
Broilers	99.9%	99.9%	Percent stunned effectively of the broiler chickens we processed (89% of our global broiler chicken supply).
Pork	0.2%	0.4%	Percent of pigs subject to repeat stunning of the pigs we processed (96% of our global pork supply).
Other Species	Not available	Not available	Data for heavy fowl, turkey, beef, and veal are not available for the 2021 reporting year.



## Transportation

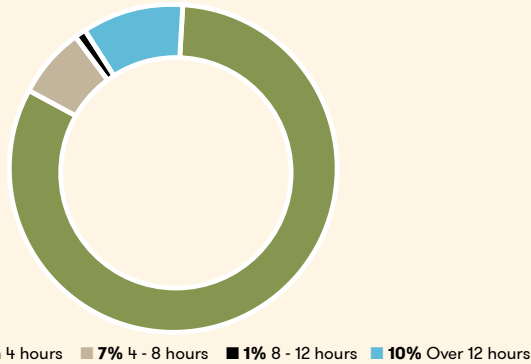
We are committed to minimizing transportation times for all animals that we process and source, including limiting transportation to less than eight hours whenever possible. We expect that transportation times, from loading to unloading, be limited to the shortest duration possible while remaining compliant with applicable regulatory requirements for provision of feed, water, and rest to animals in transit and allowable working and driving hours for livestock transporters. All of our chickens that are processed in Alberta come from barns in Alberta and all of our chickens processed in Ontario normally come from barns in Ontario. In 2021, we received a small number of chickens from Québec to assist in resolving supply chain disruptions. All turkeys we procure under contract come from barns in Ontario. Most pigs supplying our pork operations come from farms in Western Canada. In 2021, we also received hogs from Ontario and Québec due to industry disruptions. These pigs are provided with feed, water, and rest to ensure their welfare during transport.

We are compliant with the transportation requirements set by the Government of Canada Health of Animals Regulations and Safe Food for Canadians Regulations. All drivers transporting animals to our processing plants must be certified in Transport Quality Assurance® (TQA) or have Canadian Livestock Transport (CLT) certification or equivalent.

## Proportion of Global Animal Protein Supply Chain Transported Less than Eight Hours

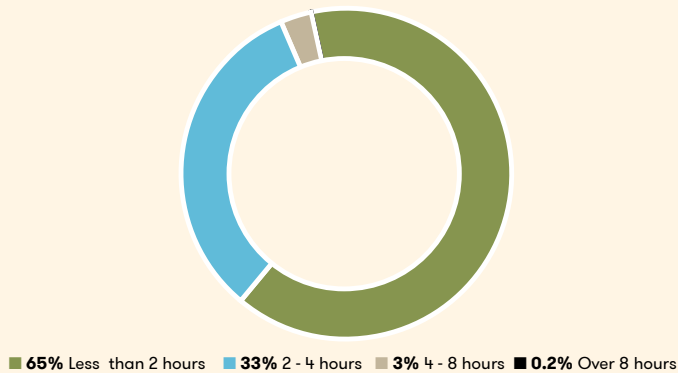
Species	2020 Proportion Transported Less than Eight Hours	2021 Proportion Transported Less than Eight Hours	Comments
Total Protein Supply	84%	85%	85% of our global animal protein supply was transported less than eight hours based on total kilograms sourced of broiler chicken, heavy fowl, pork, turkey, beef, veal, eggs, and dairy. The remaining 15% represents animals transported greater than eight hours and animals for which transportation data was unavailable.
Broilers	100%	99.8%	Chickens supplying our owned processing plants, which represents 89% of our global broiler chicken supply. 0.2% of chickens we processed were transported from out of province to assist in resolving temporary supply chain disruptions.
Pork	92%	88%	Pigs supplying our owned processing plants, which represents 96% of our global pork supply. 12% of pigs we processed were transported greater than eight hours due to industry disruptions.
Turkey	Not available	100%	Turkey sourced under contract, which represents 96% of our global turkey supply. In 2021, 100% of turkeys we sourced under contract were transported less than eight hours.
Other Species	Not available	Not available	Data for heavy fowl, beef, and veal are not available for the 2021 reporting year.

## Average Hours our Pigs Spend in Transit



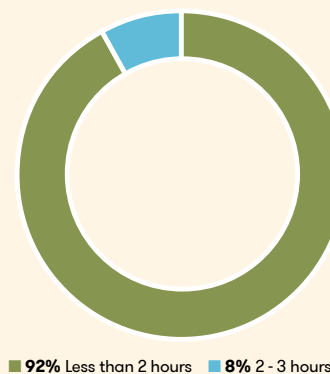
\*Pigs supplying our owned processing plants, which represents 96% of our global pork supply. In 2021, 85% of our total global pork supply was transported less than eight hours.

## Average Hours our Chickens Spend in Transit



\*Chickens supplying our owned processing plants, which represents 89% of our global broiler chicken supply. In 2021, 99.8% of broiler chickens we processed were transported less than eight hours.

## Average Hours our Turkeys Spend in Transit



\*Turkey sourced under contract, which represents 96% of our global turkey supply. In 2021, 100% of turkeys we sourced under contract were transported less than eight hours.

## Management Responsibility

Our Vice-President of Animal Care leads the implementation of our program, which incorporates leading science and advancements. Senior leaders routinely engage in animal care programs, policies and results through our internal Animal Care Council and quarterly CEO/COO updates. Our Animal Health & Welfare Technical Committee and Animal Health & Welfare Technical Committee Working Group comprise experts from throughout our Company who meet routinely to identify requirements, advance practices and monitor progress. In addition, we work with a council of external experts, the [Maple Leaf Animal Care Advisory Council](#), to recommend best practices, scientific research and innovation in an effort to help us continually improve. Animal care reports are submitted quarterly to the Safety and Sustainability Committee of the Maple Leaf Foods Board.

Senior leaders of our pig production, poultry and pork businesses continue to maintain operational responsibility for animal care, regularly reviewing reports and audits and signing off on policies. Within the business, we have five veterinarians who oversee animal welfare, along with dedicated Canadian Food Inspection Agency veterinarians and staff at each of our processing plants. Animal welfare metrics are reported regularly, and non-compliance or audit failures are addressed immediately.

## Animal Welfare Objectives and Targets

View our 2021 animal welfare performance and 2022 objectives [here](#). Learn more about our innovations in animal welfare [here](#).

## Implementation of Farm Animal Welfare Policies

Education and training are foundational to knowledge, empowerment, accountability and a strong animal care culture. Every employee involved in the raising, transport and processing of animals must be trained on and adhere to our animal care policies and procedures. All employees who handle animals receive animal care training when they commence employment, and this is reviewed annually at minimum.

Maple Leaf Foods has 35 experts who are Professional Animal Auditor Certification Organization (PAACO) certified across our pork and poultry operations, and they monitor animal welfare every day. Our people who are PAACO trained and certified have deep knowledge and skills related to animal welfare monitoring and reporting.

We use a “See It? Stop It!” program in our animal operations whereby all employees who have contact with animals formally agree to promptly report any possible animal mishandling or mistreatment they may observe. An anonymous reporting hotline is available to confidentially report animal mistreatment if employees feel uncomfortable reporting to their local management team. Any suspected or confirmed animal welfare incident is fully investigated and may result in employee discipline up to and including termination or termination of supplier/service provider agreements. Serious or egregious events are reviewed by senior management to ensure standards are implemented consistently across our operations.

In the event of a noncompliance related to transportation, handling or slaughter practices in one of our processing plants, the facility conducts a deep root cause investigation to determine appropriate corrective and preventative actions. The Corrective Action Plan (CAP) is submitted to the Canadian Food Inspection Agency (CFIA) for approval, and all actions taken will be reviewed to close the noncompliance.

All suppliers are required to adhere to animal care requirements in our [Supplier Code of Conduct](#). Specific animal welfare requirements are further stipulated in individual supplier and service provider contracts, and contracts may be terminated in the event of animal welfare noncompliance. We work with our suppliers and service providers to implement and uphold high standards of animal care by sharing best practices and contributing to research projects to advance industry knowledge and scientific understanding.

Farmers supplying our hatcheries and processing plants are valued members of our supply chain and we work closely with them to provide guidance and one-on-one support to ensure best practices in animal care are implemented and upheld.

Read more about how we oversee and monitor animal welfare compliance [here](#).

## Animal Welfare Assurance Standards

We require all Maple Leaf Foods farms and operations, and all pig and chicken producers supplying our processing operations, to meet or exceed the most current requirements under the Canadian Quality Assurance® (CQA®) Animal Care Assessment™ (ACA™) or Canadian Pork Excellence and PigCARE Programs, the Chicken Farmers of Canada Animal Care Program, the Canadian Hatching Egg Producers Animal Care Program, the Turkey Farmers of Canada Flock Care Program® and the National Farm Animal Care Council Codes of Practice. Compliance with these standards is a contractual requirement for third-party pig producers. For chicken, turkey and hatching egg producers, program compliance is a mandatory requirement to maintain supply management standing and ship to federal poultry abattoirs or commercial hatcheries, which is audited and enforced by provincial marketing boards. We support research that enhances our understanding and advances animal welfare, and advocate for regulatory reforms that raise and enforce standards across the industry.

## Proportion by Species Compliant with Animal Welfare Assurance Standards

Species	2020 Proportion Compliant with Standard	2021 Proportion Compliant with Standard	Standard	Comments
Broiler Chickens	98%	99.8%	Chicken Farmers of Canada Animal Care Program	
Broiler Chickens	4%	4%	Certified Humane® Raised and Handled and Certified Organic	Will comply with 2024 Better Chicken Commitment requirements.
Broiler Breeders	86%	86%	Canadian Hatching Egg Producers Animal Care Program	
Pork	97%	98%	Canadian Pork Excellence PigCARE or Canadian Quality Assurance® Animal Care Assessment™	Note that all Maple Leaf owned farms (40% of our global pork supply) are certified to the updated PigCARE program which includes animal-based measures.
Pork	95%	96%	North American Meat Institute Animal Care and Handling Guidelines	
Turkey	96%	97%	Turkey Farmers of Canada Flock Care Program	
Laying Hens	100%	100%	Egg Farmers of Canada Animal Care Program	
Dairy	100%	100%	Dairy Farmers of Canada proAction	
Other Species	Not available	Not available	Data for beef and veal are not available for the 2021 reporting year.	

## Research and Industry Collaboration

Maple Leaf Foods works with numerous stakeholders to advance animal care practices across the industry. We take active roles in committees and working groups that are working towards advancing animal care practices.

We also meet frequently with animal advocacy groups as they bring important perspectives to issues, global advancements and science related to animal welfare. We are committed to seeking open and constructive relationships with them.

Learn more about our research and industry collaborations [here](#).

## Educating Consumers

We are committed to educating our consumers and customers about animal welfare through transparent and honest communication. Information about animal care is available through our Maple Leaf Foods and brand websites.

<https://mapleleaffoods.com/sustainability-report/better-care/>

<https://www.mapleleaffoods.com/our-commitments/animal-care/>

<https://www.mapleleaffoods.com/stories/>

<https://greenfieldmeat.com/>

<https://www.mapleleaf.ca/prime/>

## Welfare Outcome Measures and Performance Trends

Welfare outcome measures are critically important to validate that animal management practices and housing systems are effectively controlling animal welfare risks. Welfare outcome measures additionally serve as an important mechanism to aid in decision making regarding animal husbandry and welfare standards.

## Welfare Outcome Measures

Welfare Outcome	2020 Welfare Outcome Result	2021 Welfare Outcome Result	Comments
Broiler Transport Livability	99.82%	99.85%	Broiler chickens supplying our owned processing plants, which represents 89% of our global broiler chicken supply.
Turkey Transport Livability	Not available	99.9%	Turkeys we procure under supply contracts, which represents 96% of our global turkey supply.
Pig Transport Livability	99.95%	99.96%	Pigs supplying our owned processing plants, which represents 96% of our global pork supply.
Broiler Footpad Health	Not available	70%	Percent of broiler chickens with acceptable footpad health, based on routine auditing of broiler chickens supplying our owned processing plants, which represents 89% of our global broiler chicken supply.
Turkey Footpad Health	Not available	100%	Percent of turkeys with acceptable footpad health, based on routine auditing of turkeys we sourced under supply contracts, which represents 96% of our global turkey supply.

# Maple Leaf Foods Animal Welfare Performance Report 2021

In 2021, Maple Leaf Foods had two corrective action requests (CARs) and one notice of violation (NOV) related to transportation, handling and slaughter practices for live terrestrial animals (pork and poultry). All CARs were addressed. In comparison, in 2020, Maple Leaf Foods had six CARs (pork and poultry) and zero NOVs related to transportation, handling and slaughter practices for live terrestrial animals. All CARs and NOVs were addressed. Once a warning is issued, the facility conducts a deep root cause investigation to determine appropriate corrective and preventative actions. The Corrective Action Plan (CAP) is submitted to CFIA for approval, and all actions taken will be reviewed to close the CAR. All warnings issued in 2021 were resolved and closed.

## Auditing and Oversight

### Hatcheries and Poultry Barn Operations

Each of our full chicken supply chains including hatchery, broiler farm, broiler catching & loading, and processing plant operations is audited by a third party annually, combined with a comprehensive internal auditing program for each type of operation.

- ✓ All 2021 poultry third-party audits passed with scores between 96.42% and 99.37% based on the National Chicken Council standards for broiler chickens.

All of our hatcheries are audited monthly by our PAACO-trained and certified people, annually by an independent auditor and daily through Remote Video Auditing for compliance with the National Farm Animal Care Council (NFACC) Code of Practice, Canadian Hatchery Federation Animal Care Program, and National Chicken Council (NCC) standards for welfare in broiler chicken hatcheries. The Canadian Food Inspection Agency (CFIA) also audits our processes, animal welfare documents and training records on a regular basis. We routinely monitor the placement of chicks into barns to ensure proper chick handling and barn conditions.

- ✓ In 2021, all our hatcheries achieved 100% compliance with the Canadian Hatchery Federation Animal Care Program when audited by a third party.

Maple Leaf Foods' owned pullet and broiler breeder flocks are audited monthly by our PAACO-trained people and annually by a third-party auditor according to the NFACC Code of Practice, Canadian Hatching Egg Producers (CHEP) Animal Care Program, and NCC standards for broiler breeders. Hatching egg producers are also audited by their provincial board for compliance with the CHEP Animal Care Program, which incorporates third-party auditing to ensure effective program implementation.

- ✓ Our owned breeder grower and hatching egg operations achieved 100% based on the National Chicken Council standards for broiler breeders when audited by a third party.

Our third-party broiler chicken farmers undergo internal animal welfare audits by our PAACO-trained Animal Health and Welfare Technicians (AHWT) according to the NFACC Code of Practice, Chicken Farmers of Canada (CFC) Animal Care Program and NCC standards for broilers. All broiler chicken farmers are also audited by their provincial chicken board for compliance with the CFC Animal Care Program, which incorporates third-party auditing to ensure effective program implementation.

As part of our broiler welfare program, some of our farms also meet the standards of Certified Humane® Raised and Handled and Canadian Organic standards.

- ✓ We maintained certification with the Certified Humane® Raised and Handled and Canadian Organic standards for all operations supplying this program in 2021.

Our trained auditors routinely perform chicken catching and loading audits of our third-party contracted catching companies and live haulers according to the NFACC Code of Practice and NCC standards for broilers. Our investment in dedicated, trained auditors responsible for supporting on-farm animal welfare practices of third-party broiler chicken farmers is leading to improvements in bird welfare from chick placement through to catching, transportation and processing. Broiler grow-outs, catching and loading also undergo annual third-party auditing.

## Hog Barn Operations

All of Maple Leaf Foods' owned hog production operations are audited annually by our internal quality assurance personnel, as well as by a third-party HACCP- and PAACO-certified auditor. Maple Leaf Foods is the first company in Canada to move to full, annual on-farm Canadian Pork Excellence and PigCARE program audits that include animal-based measures. In addition, our owned hog farms receive routine service visits by our internal technical experts. Our five feed mills are licensed by CFIA and are subject to annual audits as well.

- ✓ All our owned hog farms passed their annual third-party audits demonstrating compliance with the Canadian Pork Excellence and PigCARE programs.

Our third-party hog suppliers to our pork plants are required to follow the protocols of the Canadian Quality Assurance Program and Animal Care Assessment Program, which are transitioning to the Canadian Pork Excellence and PigCARE programs, and all elements of the programs are audited by certified auditors.

## Meat Processing Operations

Our meat processing facilities are monitored by dedicated on-site inspectors from the CFIA. All our processing operations are required to undergo comprehensive third-party animal welfare audits, a minimum of annually, which are conducted by PAACO-certified auditors. These third-party auditors have open access to our facilities and the freedom to interview any of our employees as part of the audit process. This allows us to test the effectiveness of our animal welfare practices and procedures based on established and quantifiable animal well-being guidelines. All of our meat processing operations are also audited daily on each shift through third-party Remote Video Auditing with the exception of our recently acquired poultry processing facility. Remote Video Auditing will not be implemented in this plant as we have announced our intention to close the facility.

- ✓ Our pork plants passed their 2021 third-party audits based on the North American Meat Institute Recommended Animal Handling Guidelines and Audit Guide.
- ✓ Our poultry plants passed their 2021 third-party audits based on the National Chicken Council standards for broiler chickens.

## Broiler Chicken Welfare

In Canada the NFACC Code of Practice for the Care and Handling of Hatching Eggs, Breeders, Chickens and Turkeys normally permits stocking densities of up to 31 kg/m<sup>2</sup>, or up to 38 kg/m<sup>2</sup> if additional welfare provisions are met. We adhere to the Code of Practice and in our experience, welfare outcomes do not differ between upper stocking density limits of 30 kg/m<sup>2</sup> and 31 kg/m<sup>2</sup>. The proportion of broiler chickens produced at or below 31 kg/m<sup>2</sup> was lower in 2021 versus 2020 due to increased chicken growing allocations to farmers as a result of industry growth.

We have conducted multiple slow growing broiler chicken field tests and have completed a full evaluation of the animal welfare, efficiency, production and environmental impacts of slower growing breeds as compared with conventional breeds.

## Broiler Chicken Stocking Density and Breed Information

Welfare Attribute	2020 Proportion of Global Broiler Chicken Supply	2021 Proportion of Global Broiler Chicken Supply	Comments
Stocking Density	66%	57%	Proportion of broilers in our global supply chain grown at stocking densities of 31 kg/m <sup>2</sup> or less. Of the broilers that directly supply our primary processing operations, 69% were grown at stocking densities of 31 kg/m <sup>2</sup> or less.
Slower Growing Breeds	0%	0%	Proportion of broilers in our global supply chain utilizing slower growing chicken breeds.